

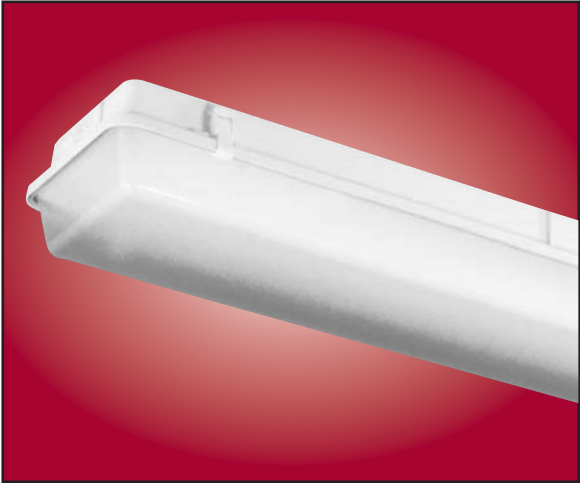


Gasketed Enclosure Lens

For Wet and Damp Locations

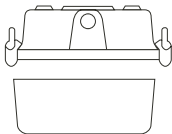
Description

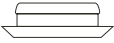
Gasketed Enclosures are **dust and moisture resistant** and require the installation of a striplight or channel type lighting fixture. The enclosures are composed of a **fiberglass body** and a **high impact acrylic / DR crepe pattern diffuser** positioned into the **continuous gasketed upper body** slot and securely held in place by **celcon retaining latches** that assure a **continuous seal**.



Gasketed Enclosures For Wet and Damp Locations

	LCW	Celcon Latch
---	-----	--------------



	FEPW FEPW 1125	White End Plug 7/8" DIA
---	-------------------	-----------------------------

Catalog No.	Description	Size
LENS-VT2'	2' Vapor Tite Lens	6-1/2" x 25-3/4"
LENS-VT4'	4' Vapor Tite Lens	7-5/8" x 49"
LENS-VT4'L	4' Vapor Tite Lens Long	7-5/8" x 52"
LENS-VT8'	8' Vapor Tite Lens	7-5/8" x 98"
LENS-VT8'L	8' Vapor Tite Lens Long	7-5/8" x 102"
VTLATCHES	Vapor Tite Latches	
VTFEPW	Vapor Tite End Plugs	